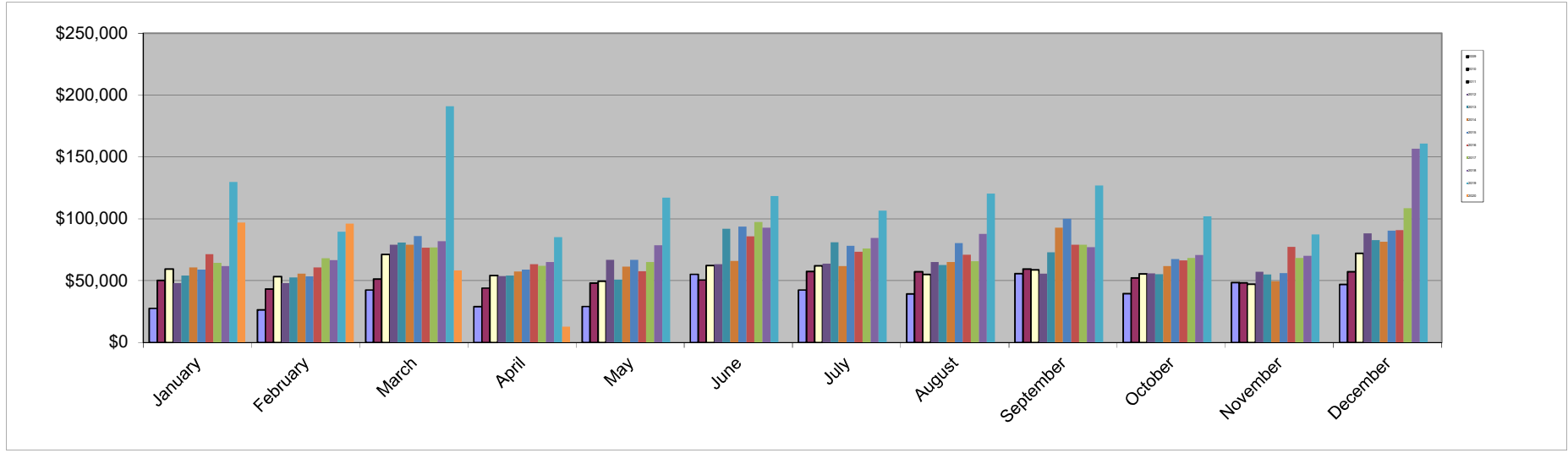


Gilpin County School District Sales Tax Disbursements



	January	February	March	April	May	June	July	August	September	October	November	December	Annual Total	Total Since Inception
2009	\$27,612	\$26,407	\$42,333	\$28,911	\$29,136	\$55,095	\$42,349	\$39,165	\$55,650	\$39,491	\$48,326	\$46,851	\$481,326	\$481,326
2010	\$50,262	\$43,243	\$51,218	\$43,941	\$48,075	\$50,575	\$57,448	\$57,025	\$59,416	\$52,162	\$48,273	\$57,095	\$618,731	\$1,100,057
2011	\$59,327	\$53,323	\$71,242	\$54,224	\$49,444	\$62,143	\$61,965	\$54,917	\$58,616	\$55,431	\$47,213	\$72,125	\$699,969	\$1,800,026
2012	\$48,076	\$48,023	\$79,127	\$53,672	\$66,790	\$63,366	\$63,636	\$65,029	\$55,578	\$55,894	\$57,219	\$88,109	\$744,518	\$2,544,544
2013	\$54,205	\$52,689	\$80,882	\$54,150	\$50,828	\$91,927	\$80,964	\$62,555	\$73,040	\$55,159	\$54,883	\$82,813	\$794,094	\$3,338,639
2014	\$60,731	\$55,599	\$79,109	\$57,425	\$61,338	\$65,768	\$61,659	\$65,001	\$92,882	\$61,665	\$49,492	\$81,434	\$792,104	\$4,130,742
2015	\$58,966	\$53,472	\$86,074	\$58,960	\$66,680	\$93,728	\$78,244	\$80,379	\$100,098	\$67,520	\$55,969	\$90,527	\$890,615	\$5,021,357
2016	\$71,520	\$60,596	\$76,704	\$63,372	\$57,504	\$85,937	\$73,353	\$71,029	\$79,139	\$66,479	\$77,366	\$90,842	\$873,842	\$5,895,199
2017	\$64,289	\$68,093	\$76,869	\$61,956	\$65,027	\$97,502	\$75,940	\$65,739	\$78,908	\$68,463	\$68,382	\$108,532	\$899,702	\$6,794,901
2018	\$61,896	\$66,540	\$81,967	\$65,018	\$78,457	\$92,945	\$84,546	\$87,653	\$77,050	\$70,742	\$70,110	\$156,509	\$993,433	\$7,788,334
2019	\$129,825	\$89,583	\$191,045	\$85,110	\$117,037	\$118,288	\$106,609	\$120,321	\$126,886	\$102,134	\$87,272	\$160,679	\$1,434,788	\$9,223,122
2020	\$97,077	\$96,058	\$58,312	\$12,690	\$0	\$0	\$0	\$0	\$0	\$0	\$0	\$0	\$264,137	\$9,487,259
% Change	-25.22%	7.23%	-69.48%	-85.09%	-100.00%	-100.00%	-100.00%	-100.00%	-100.00%	-100.00%	-100.00%	-100.00%		

* Effective December 1, 2018 the City began to collect a Consumer Use Tax. Included in the Use Tax is the 1.50% Educational Enhancement Tax